

Group 14 Heater, Defroster, and Air Conditioning System

GENERAL: This group contains information on the automotive heating-air conditioning system from the engine water pump, and from freon compressor to the heater/air conditioning units in the coach.

SPECIFICS: As applicable

...Freon Compressor

...Heater-Air Conditioning Controls on  
Instrument Panel

...Heater-Air Conditioning Ducts and Hardware

...Heater-Air Conditioning Lines, Hoses, and  
Fittings

...Heater-Cooler Unit and Hardware



FMC Corporation  
Recreational Vehicle Division  
333 Brokaw Road Box 664 Santa Clara, California 95052



FMC Corporation  
Motor Coach Division  
333 Brokaw Road Box 664 Santa Clara California 95052

URGENT

ROUTINE

MANDATORY

INFORMATIONAL

# Service Bulletin

DATE 3 September 1974

NUMBER 2914 40001

ATTENTION: SERVICE MANAGERS		GROUP 14									
<p><u>DESCRIPTION</u></p> <p>This service bulletin is issued to overcome possible freon compressor failures due to loss of freon in the automotive air conditioning system (Thermoking) on the 2900R Motor Coach. A clutch cutout switch installed in the freon return line will disconnect the compressor if a leak should develop causing loss of freon and oil in compressor crankcase and subsequent damage to the compressor.</p> <p><u>KIT CONTENTS (5100371-R002)</u></p> <table border="1"> <thead> <tr> <th><u>RVD NUMBER</u></th> <th><u>DESCRIPTION</u></th> <th><u>QTY</u></th> </tr> </thead> <tbody> <tr> <td>M24509</td> <td>Switch, Low Pressure</td> <td>1</td> </tr> <tr> <td>M24530</td> <td>Connector, Switch to Tee</td> <td>1</td> </tr> </tbody> </table> <p><u>INSTRUCTIONS</u></p> <ol style="list-style-type: none"> <li>Locate freon compressor return line tee on right side of coach at rear. See Repair Parts Catalog, page 14-3, item 16.</li> <li>Disconnect tee at lines and remove tee from coach.</li> <li>On the flat side of the tee, drill and tap a 1/8" national pipe thread in the center of the flat.</li> <li>Thread connector (M24530) into tee and install low pressure switch (M24509) into connector.</li> </ol> <p style="text-align: center;"><b>CAUTION</b></p> <p>Do not over tighten switch in connector. Remove filings and dirt from tee and fittings.</p> <ol style="list-style-type: none"> <li>Install tee with adapter and switch into return line.</li> <li>Connect existing #14 brown wire to terminals on low pressure switch.</li> <li>Recharge system with freon and test for leaks.</li> </ol>		<u>RVD NUMBER</u>	<u>DESCRIPTION</u>	<u>QTY</u>	M24509	Switch, Low Pressure	1	M24530	Connector, Switch to Tee	1	<p>SUBJECT</p> <p>AUTOMOTIVE AIR CONDITIONING</p> <p>MODEL (S) AFFECTED</p> <p>2900R 00001 TO 00580</p> <p>(Factory Use Only) Information added to:</p> <p>OWNER MANUAL (S)</p> <p>SERVICE MANUAL (S)</p> <p>PARTS MANUAL (S)</p> <p>WARRANTY MANUAL (S)</p> <p>OTHER</p>
<u>RVD NUMBER</u>	<u>DESCRIPTION</u>	<u>QTY</u>									
M24509	Switch, Low Pressure	1									
M24530	Connector, Switch to Tee	1									



FMC Corporation  
 Motor Coach Division  
 333 Brokaw Road Box 664 Santa Clara California 95052

URGENT       ROUTINE  
 MANDATORY       INFORMATIONAL

# Service Bulletin

DATE 3 September 1974

NUMBER 2914 40001

ATTENTION: SERVICE MANAGERS	GROUP 14
<p><u>WARRANTY REIMBURSEMENT</u></p> <p>FMC Motor Coach Division will allow a maximum of two labor hours and reimbursement for Kit 5100371-R002 on a properly filled out Warranty Claim (Form RVD 69). Authorization for dealer to proceed must be obtained from Motor Coach Division Service Department prior to performing the work.</p> <p><i>Max L. Snavely</i>        MAX L. SNAVELY        Service Manager</p>	SUBJECT  AUTOMOTIVE AIR CONDITIONING
	MODEL (S) AFFECTED  2900R  00001 TO 00580
	(Factory Use Only) Information added to:  OWNER MANUAL (S)
	SERVICE MANUAL (S)
	PARTS MANUAL (S)
WARRANTY MANUAL (S)	
OTHER	



# MIDWAY R.V. SERVICE

8301 Bolsa Avenue — Box 157  
Midway City, California 92655  
(714) 897-1926

GROUP 14

FACTORY-AUTHORIZED  
WARRANTY & SERVICE  
CUSTOM INNOVATIONS

ADREEN NORMAN RASMUSSEN  
Owner

## REPLACEMENT OF BLOWER MOTORS IN HEATER/AIR CONDITIONING UNIT (UNDER DASH)

REFER TO GROUP 14, page 14-24 and 14-12, in <sup>following</sup> parts catalog for exploded views.

Remove cover on unit. Remove top section of unit for access to blower motors.

# REPAIR PARTS LIST

GROUP 14 Heater and Air Conditioning System  
 MODEL 2900 R

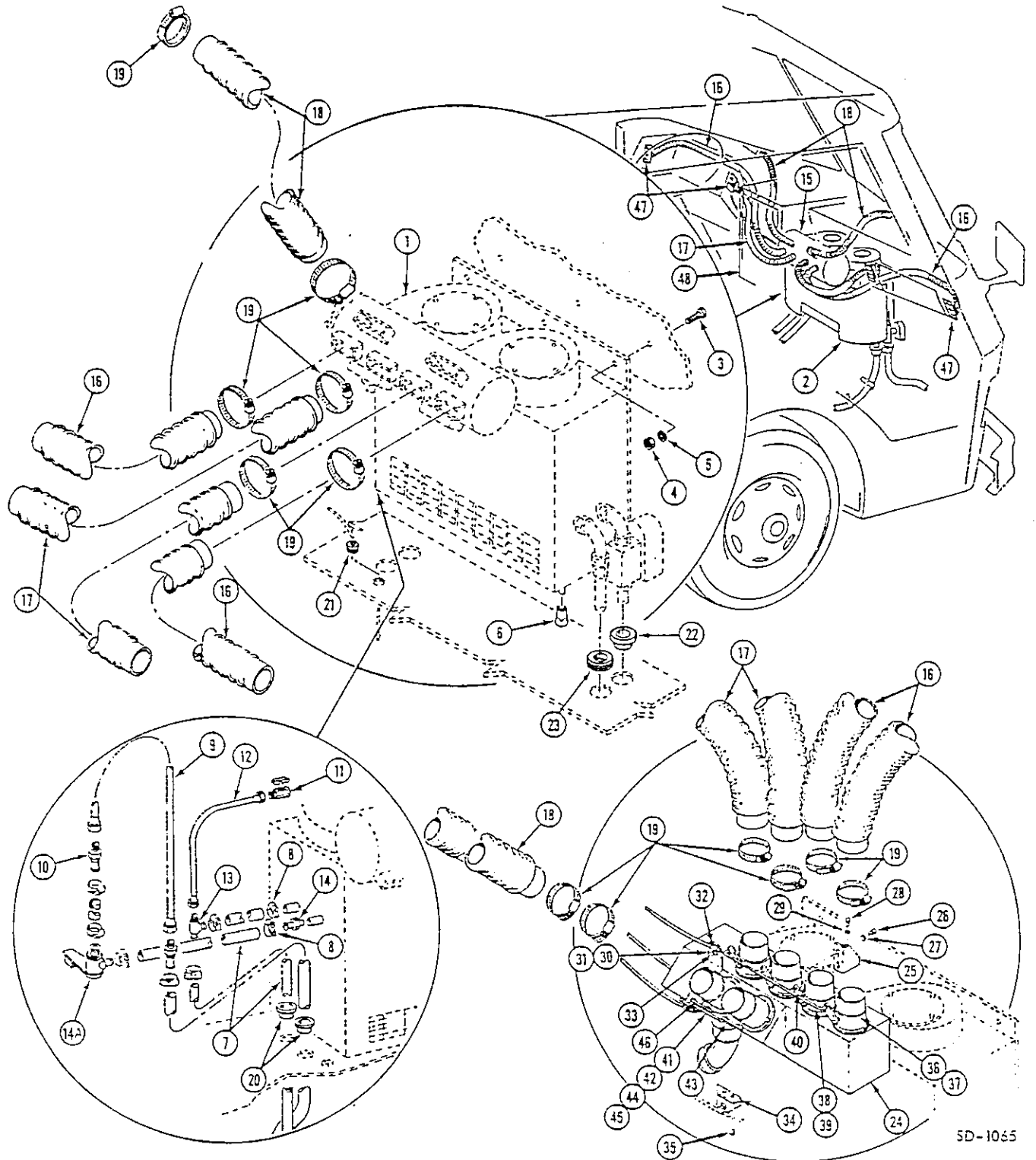


Figure 14-6. Heater Cooler Unit and Distribution Tube - Automotive Air

SD-1065

# REPAIR PARTS LIST

14 Heater and Air  
Conditioning System  
GROUP  
MODEL 2900R

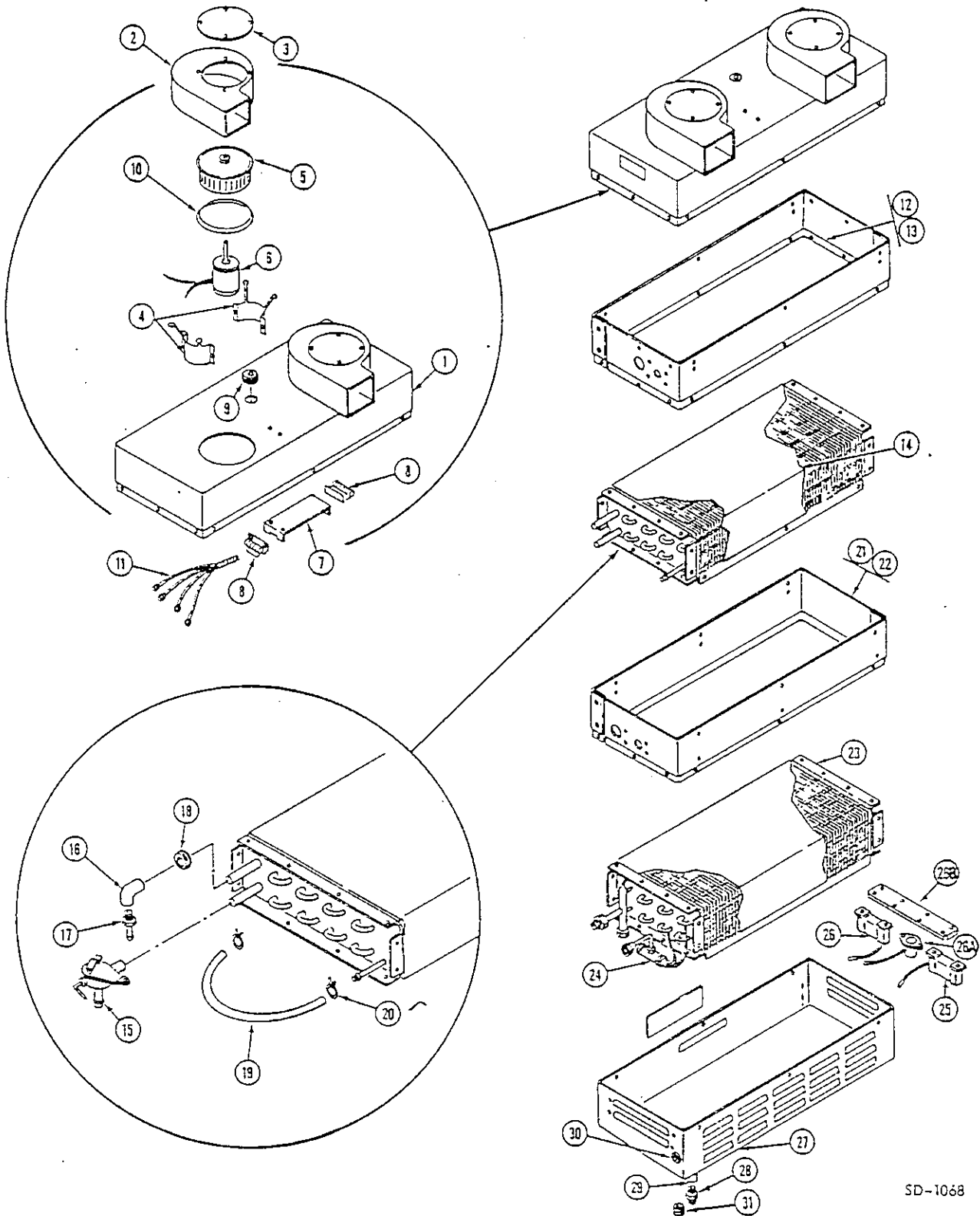
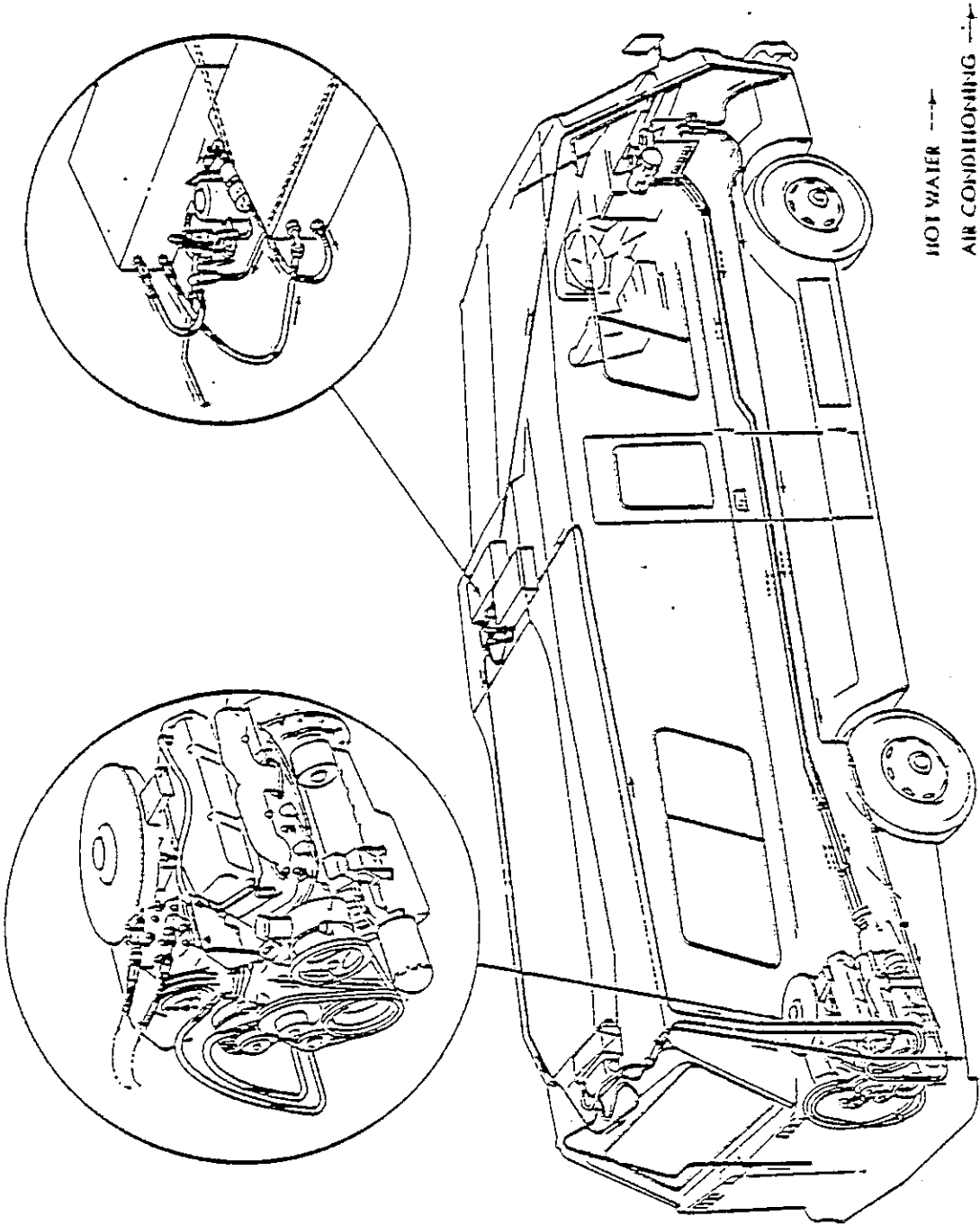
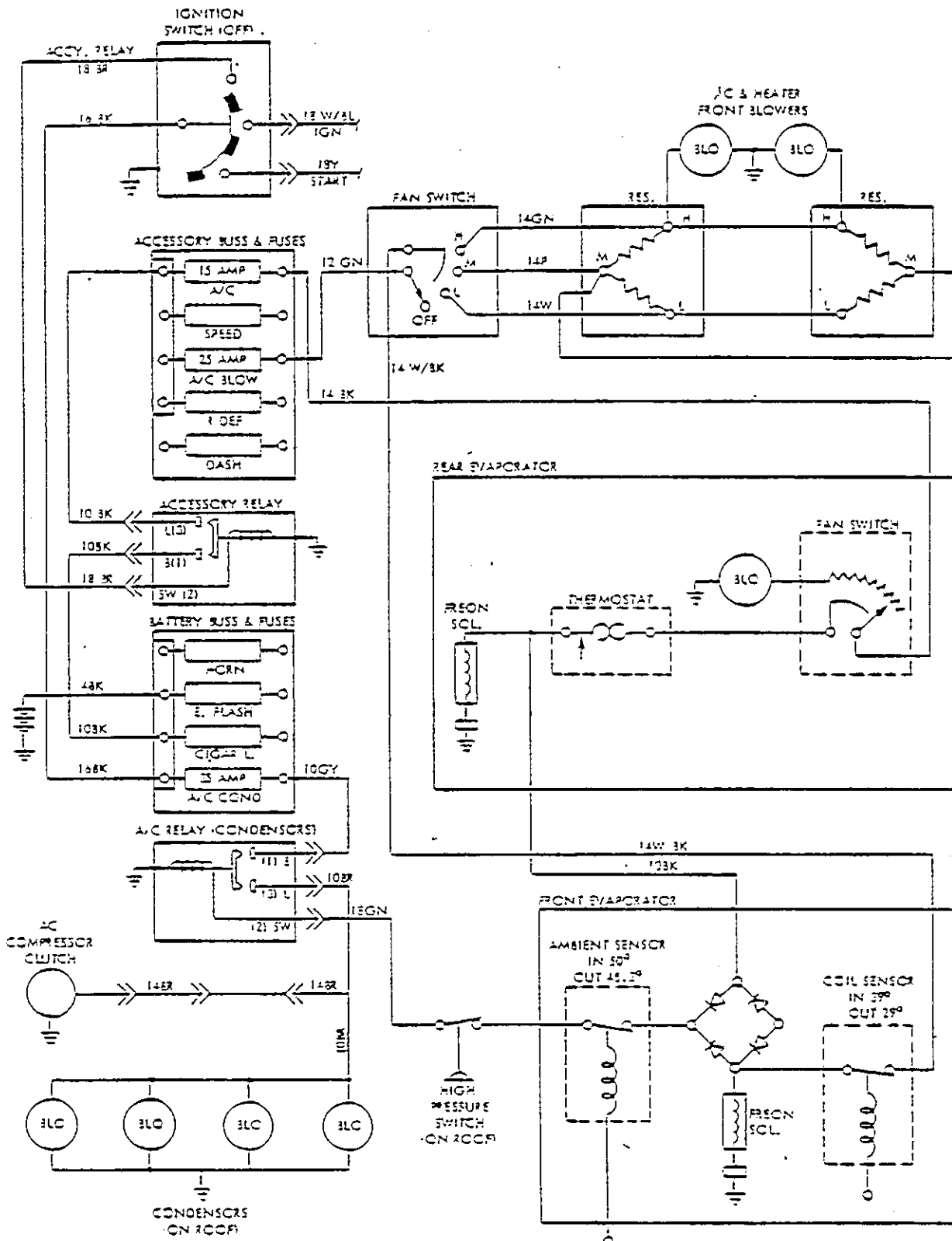


Figure 14-12. Heater-Cooler Assembly (Component Parts)

SD-1068



Automotive Heating-Air Conditioning



Auto A/C Circuit