



Low to the ground



A door for the driver



Picture-window dining



Rear-engine quiet



Comfortable master cabin



Home cooking away from home



Flat front deck



FMC 2900R

**FMC** Recreational Vehicles

Engineering makes the difference.

# We asked RV owners what the ultimate motor coach should be.

## Here you have it.

This is the smooth-riding 29-foot luxury coach you've waited for.

It has the features experienced recreational vehicle owners have told us they've wanted. Starting from the revolutionary new road-hugging chassis,

we engineered it from scratch. With a new rear engine quiet.

Plus smooth passenger car roadability. And true luxury touring throughout.

Test drive it. You'll see the beautiful difference.

# FMC 2900R

## Specifications

(Eff. April, 1973)

- |  |  |
|--|--|
| <input type="checkbox"/> Length . . . . . 29 feet 7 inches | <input type="checkbox"/> Front Wheel Track . . . . . 81 inches |
| <input type="checkbox"/> Width . . . . . 8 feet            | <input type="checkbox"/> Wheel Base . . . . . 185 inches       |
| <input type="checkbox"/> Height . . . . . 8 feet 8 inches  | <input type="checkbox"/> GVW Rating . . . . . 14,500 pounds    |

## Standard Features

### Automotive

- 440 cu. in. rear engine—Chrysler Industrial V8
- Engine completely accessible from exterior
- Custom chassis
- Independent front and rear suspension
- Heavy duty radiator with transmission cooler
- Heavy duty automatic transmission
- 105 amp. hour battery
- 60 amp. alternator
- 60 gallon fuel tank
- Full instrumentation—fuel, speed, oil, water, tach, generator
- Power steering
- Power brakes
- Frame tie and tow hooks
- Concealed front wipers and washers
- Michelin tires—7.50 x 17—8 Ply Radial
- Wheel covers
- Adjustable shaft—tilt wheel steering

### Electrical

- 110V/12V lights and plugs
- 45 amp. converter
- TV antenna
- Prewired trailer connector
- 180 amp. hour auxiliary battery
- 6500 watt auxiliary power unit

### Convenience

- Color coordinated interior
- 8 cubic ft. refrigerator/freezer
- 4 burner range—eye-level oven
- Map light
- Tub/shower
- 2 rear beds—36 x 80 each convert to queen-size bed
- Double front bed (43 x 76)
- Bath exhaust fan
- Electric clock-caution panel
- Rear lounge table
- Tinted windows
- AM-FM stereo radio and tape deck

### Livability

- 60 gallon water capacity
- Water purifier
- 65 gallon dual waste holding tanks
- Thermasan waste system

- 10 gallon hot water heater
- 20 gallon LPG tank
- 84 cubic ft. interior storage
- 26 cubic ft. exterior storage
- System indicator panel
- Vehicle level indicator

### Safety

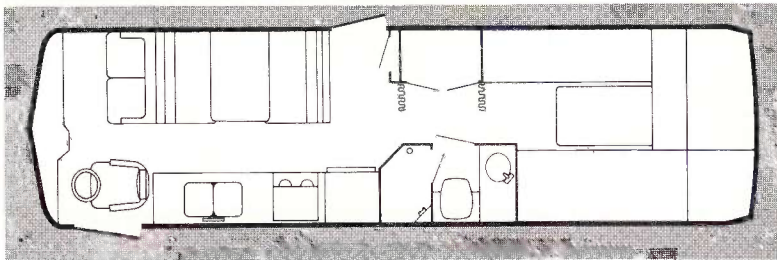
- Steel chassis
- Aluminum upper cage frame
- Seat belts
- Shoulder harness
- Head restraints
- Driver and passenger door
- Emergency flashers
- Brake warning light
- Tinted safety windshield
- Fire extinguisher
- Courtesy door lights
- Shock-absorbing bumpers
- Back-up lights and warning buzzer

### Heating & Cooling

- 36000 BTU automotive heat/defrost
- 30000 BTU ducted furnace
- 28000 BTU dual automotive cooling
- 22000 BTU dual aux. cooling

Because of our continuing program of product improvement, specifications, equipment and prices subject to change without notice.

**FMC 2900R** 29 FEET OF EASY LIVING.



**MOTOROAM, INC.**

8801 WASHINGTON HWY.  
RICHMOND, VA. PHONE 266-5544  
SERVICE FOR ALL MAKES

*Harvey B. Vaughan*

**FMC** Recreational Vehicles

Engineering makes the difference.

FMC CORPORATION, RECREATIONAL VEHICLES DIVISION/P.O. BOX 664, SANTA CLARA, CA 95052