

Group 10 Parking Brake

GENERAL: This group contains information on the coach parking brake from the actuating lever to the transmission.

SPECIFICS: As applicable

...Parking Brake Cables and Hardware

...Parking Brake Lever and Hardware

. . . Parking Brake Components



FMC Corporation
Motor Coach Division
333 Brokaw Road Box 664 Santa Clara California 95052

REPAIR PARTS LIST

GROUP 10 Brakes - Parking
MODEL 2900R

SD-490

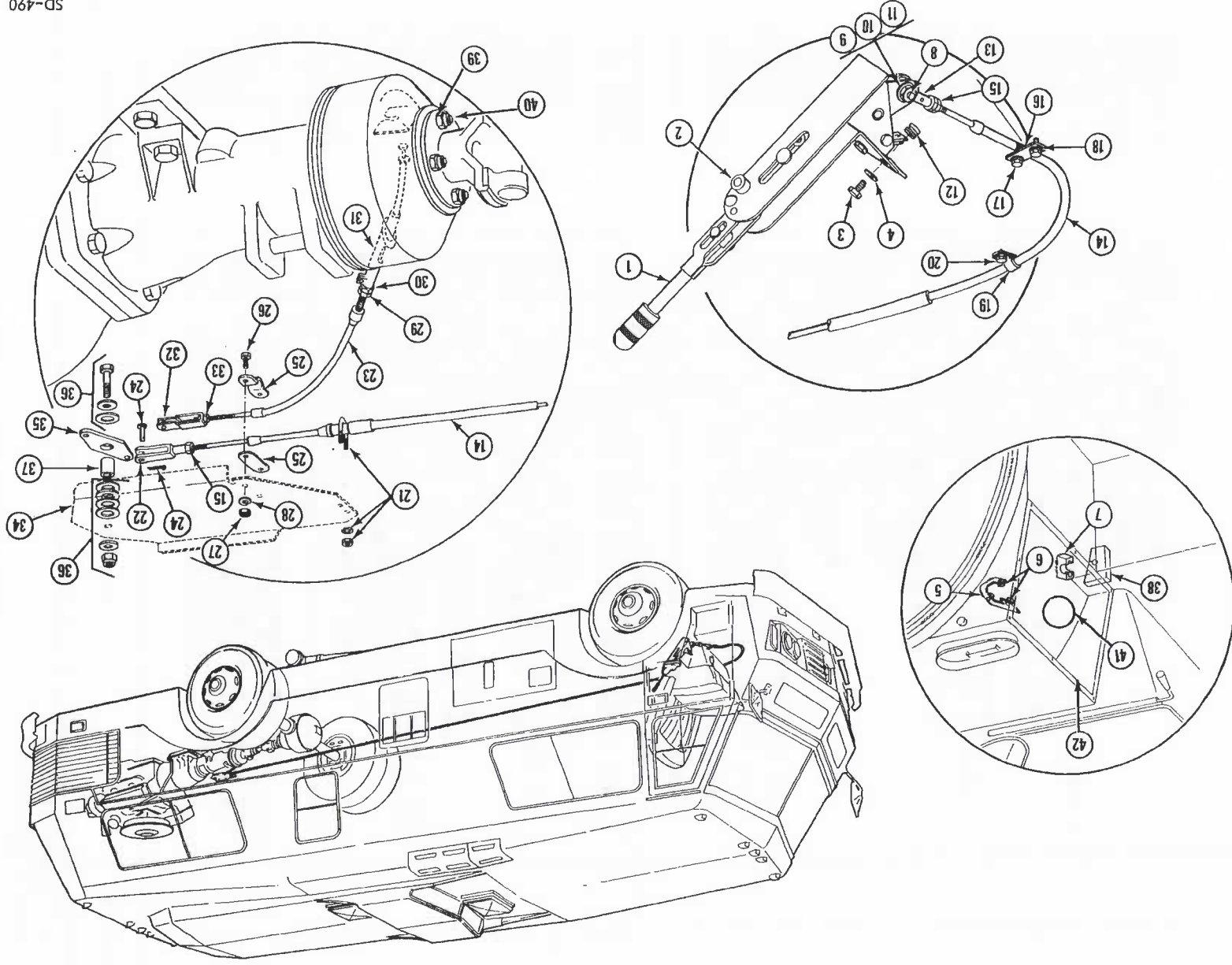


Figure 10-1. Parking Brake and Cable Assembly

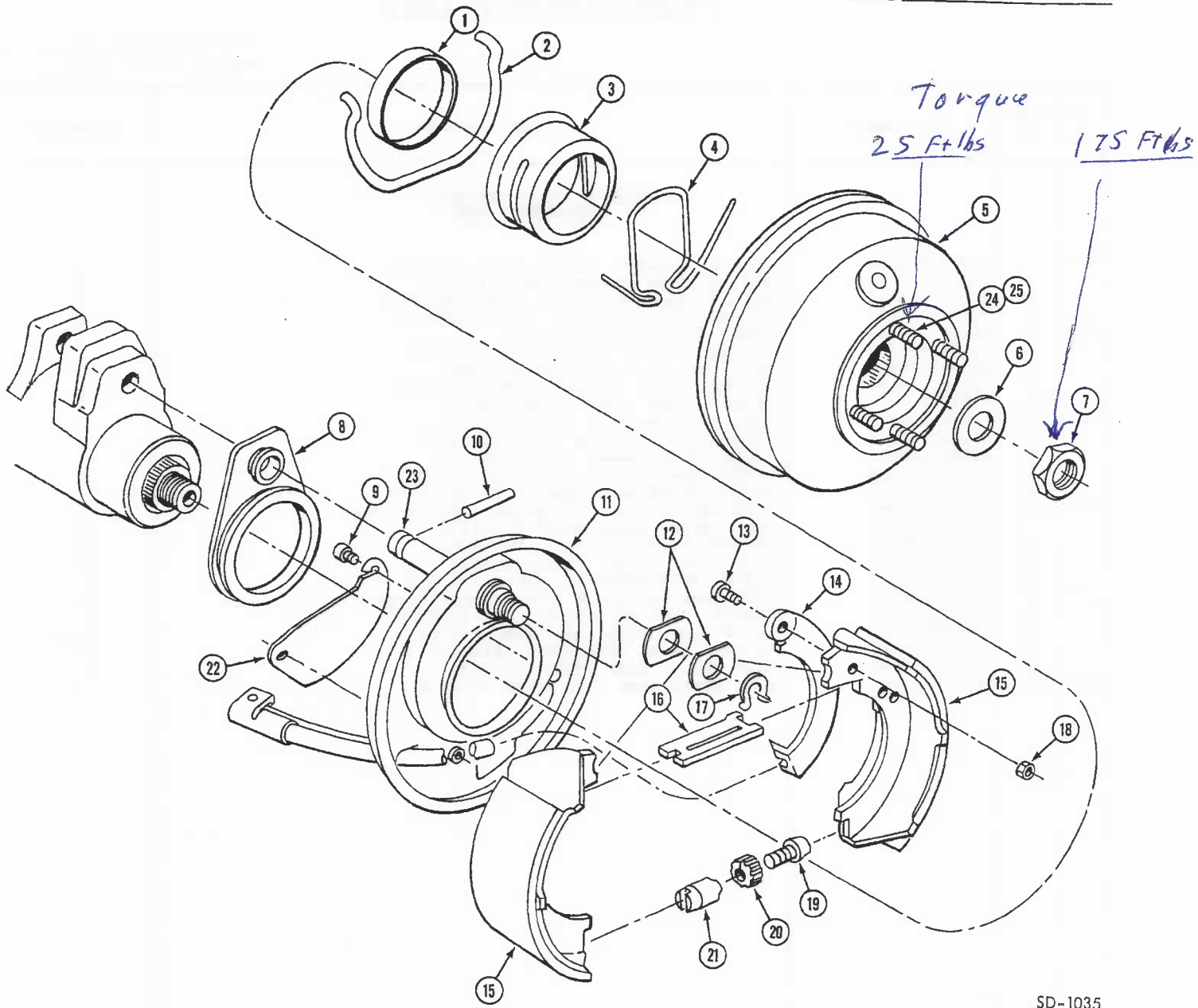
REPAIR PARTS LIST

GROUP 10
MODEL 2900R

FIG NO.	ITEM NO.	PART NUMBER	ITEM DESCRIPTION	QTY PER UNIT
10-1	1	5100324	BRAKE LEVER ASSY, Hand (OBL 3100-C23A-1400)	1
	2	M18048	BOLT, Brake lever assy to frame (5/16-18 x 1-3/4)	1
	2	M17042	WASHER, Brake lever assy to frame bolt, split (5/16 ID)	1
	3	M18033	BOLT, Brake lever assy to bracket hex hd (5/16-18 x 3/4)	2
	4	M17042	WASHER, Brake lever assy to bracket bolt, split (5/16 ID)	2
	5	5100537-01M	BRACKET AND NUT ASSY, Hand brake (welded to frame) (coach 00001 to - 00799)	1
10-1	6	5108061	BRACKET, Hand brake (welded to frame)-(coach 00800 & up)	1
	7	5100976-04	NUT, Hand brake bracket (5/16-18)	3
	8	5100537-02	BLOCK, Hand brake cable (welded to frame)	1
	9	M18076	BOLT, Brake lever to rod end (3/8-16 x 1-5/8)	1
	10	M17010	NUT, Brake lever assy to rod end bolt, hex (3/8-16)	1
10-1	11	M17007	WASHER, Brake lever assy to rod end bolt, split (3/8 ID)	1
	11	M17004	WASHER, Brake lever assy to rod end bolt, Flat (3/8 ID)	1
	12	5100976-04	NUT, Hand brake switch (5/16-18)	1
	13	5100883-01	ROD END, Forward cable assy to brake lever assy	1
	14	5100323	CABLE ASSY, Forward rod end to clevis pin assy	1
10-1	15	M17032	NUT, Cable clevis (3/8-24)	2
	16	5100304-01	PLATE, Forward cable assy retaining	1
	17	M18075	SCREW, Retaining plate to block (3/8-16 x 7/8)	2
	18	M17007	WASHER, Retaining plate to block screw, split (3/8 ID)	2
	19	M22036	CLAMP, Forward cable assy support (3/4)	AR
	20	M14037	SCREW, Forward cable assy support clamp to frame (No. 10 x 3/8)	AR
	21	5100321-01	U-BOLT ASSY, Forward cable assy to bell-crank to assy	1
	22	5100320-01	CLEVIS ASSY, Forward cable assy to bell-crank	1
	23	5100317-01	CABLE ASSY, Aft, parking brake lever to bell-crank (OBL 15296000)	1
		M25093	COTTER PIN, Aft cable clevis to bell-crank attaching (3/32 x 3/4)	1
10-1	24	M25092	HEADED PIN, Aft cable clevis to bell-crank (3/8 x 3/4)	1
	25	5100318-01	CLAMP, Aft cable assy to bell-crank assy	1
	26	M18024	BOLT, Clamp to bell-crank assy, hex hd (3/8-16 x 3/4)	2
	27	M17010	NUT, Clamp to bell-crank assy bolt, hex (3/8-16)	2
	28	M17007	WASHER, Clamp to bell-crank assy bolt, split (3/8 ID)	2
10-1	29	5100316-01	NUT, Aft cable assy, lock	1
	30	5100315	NUT, Aft cable assy adjusting	1
	30	5100314-01	WASHER, Outer, after cable assy	1
	31	5100313-01	BUSHING, Aft cable assy	1
	31	5100312-01	WASHER, Inner, aft cable assy	1
10-1	32	5100317-R001	CLEVIS, Aft cable to bell-crank	1
	33	5100317-R002	NUT, Clevis to aft cable (1/4-28)	2
	34	5100362	BELL-CRANK AND BRACKET ASSY, Hand brake	1
		M18037	BOLT, Bell-crank assy to frame (1/2-13 x 1-1/4)	2
		M17055	NUT, Bell-crank assy to frame bolt 1/2-13)	2
	M17006	WASHER, Bell-crank assy to frame bolt, split (1/2 ID)	2	
10-1	35	5100362-02	BELL-CRANK, Forward cable assy to aft cable assy	1
	36	M18026	BOLT, Bell-crank to channel (1/2-13 x 2)	1
	36	M17049	NUT, Bell-crank to channel bolt, lock (1/2-13)	1
	36	M17048	WASHER, Bell-crank to channel bolt, flat (3/4)	AR
	36	M17012	WASHER, Bell-crank to channel bolt, flat (9/16)	2
	37	5100362-03	TUBE, Bell-crank and channel spacer (1/2 ID x 3/4 OD x 1)	1
	38	5106001	PLUG, Brake cable to frame closure	1
	39	5100011-R221	NUT, Drum bolt (CCMI-9419656)	4
	40	5100011-R220	BOLT, Drum flange (CCMI-1946283)	4
	41	M20013	GROMMET, Brake cable (left wheel well)	1
	42	5107148-13	COVER, Brake adjustment access	1
		M14017	SCREW, Access Cover	4

REPAIR PARTS LIST

GROUP 10 Parking Brake
 MODEL 2900R



SD-1035

Figure 10-2. Parking Brake Assembly - Component Parts

REPAIR PARTS LIST

GROUP 10
MODEL 2900R

FIG NO.	ITEM NO.	PART NUMBER	ITEM DESCRIPTION	QTY PER UNIT
<u>PARKING BRAKE ASSEMBLY-</u> <u>COMPONENT PARTS</u>				
10-2	1	5100011-R213	SLEEVE, Support spacer (CCMI-1488890)	1
	2	5100011-R196	SPRING, Shoe return (CCMI-1403611)	1
	3	5100011-R212	SHIELD, Support grease (CCMI-1488901)	1
	4	5100011-R203	SPRING, Grease shield (CCMI-1530775)	1
10-2	5	5100011-R193	DRUM, Brake (CCMI-1949579)	1
	6	5100011-R395	WASHER, Output shaft (CCMI-2204543)	1
	7	5100011-R394	NUT, Output shaft (CCMI-2125080)	1
	8	5100011-R226	SPACER, Brake support (CCMI-1488889)	1
	9	5108121-44	SCREW, Brake cover (CCMI-425577)	1
10-2	10	5100011-R433	PIN, Brake support (CCMI-141160)	2
	11	5100011-R211	SUPPORT, Brake shoe (CCMI-1738221)	1
	12	5100011-R199	GUIDE, Shoe anchor (CCMI-1403574)	1
	13	5100011-R224	SCREW, Operating lever (CCMI-1929685)	2
	14	5100011-R222	LEVER, Brake operating (CCMI-2227695)	1
10-2	15	5100011-R194	SHOE AND LINING ASSY, Brake (CCMI-2240637)	1
	16	5100011-R223	LINK, Brake lever (CCMI-1406677)	2
	17	5100011-R198	WASHER, Brake anchor (CCMI-600983)	1
	18	5100011-R225	NUT, Lever screw (CCMI-2129684)	2
	19	5100011-R200	SCREW, Shoe adjusting (CCMI-1314478)	1
10-2	20	5100011-R201	NUT, Shoe adjusting screw (CCMI-1314477)	1
	21	5100011-R204	SLEEVE, Shoe adjusting (CCMI-1314476)	1
	22	5100011-R202	COVER, Shoe adjusting (CCMI-1317858)	1
	23	5100011-R197	ANCHOR, Brake shoe (CCMI-1488884)	1
	24	5100011-R220	BOLT, Brake drum (CCMI-1946283)	1
10-2	25	5100011-R221	NUT, Brake drum bolt (CCMI-9419656)	4
				4