

Group 5 Front Suspension

GENERAL: This group contains information on the front wheel suspension components designed to suspend the coach above the ground.

SPECIFICS: As applicable

- ...Control Arms and Sockets
- ...Leaf Spring and Attaching Hardware
- ...Radius Rods
- ...Shock Absorbers
- ...Wheel Spindles and Associated Parts

REPAIR PARTS LIST

GROUP 5
MODEL 2900R

FIG NO.	ITEM NO.	PART NUMBER	ITEM DESCRIPTION	QTY PER UNIT	
FRONT SUSPENSION (Coaches 00001 to 00645)					
5-1	1	5101014	SUSPENSION ARM, Lower, right hand	1	
	1	5101015	SUSPENSION ARM, Lower, left hand	1	
	2	5100810	BOLT, Suspension arm pivot (1 x 8 x 7-1/8 long)	2	
	3	M17028	NUT, Pivot bolt, hexagon, slotted (1 x 8)	2	
	4	M25063	COTTER PIN, Pivot bolt (0.188 x 2)	2	
5-1	5	5100066-W01	ARM AND SPINDLE ASSY, Upper suspension	2	
	6	5101073	BLOCK, Suspension arm to frame	4	
	7	M18079	SCREW, Block to frame, hexagon head (3/8 x 16 x 2-1/4)	16	
	8	M17007	WASHER, Block to frame screw (3/8 ID)	16	
	9	M17025	NUT, Upper suspension arm, hexagon, slotted (5/8 x 18)	4	
	10	5100702	WASHER, Thrust (1.005 ID x 2-1/4 OD x 1/4 thick) (Production)	4	
	10	M17198	WASHER, Thrust (Service)	4	
	11	5100570-05	WASHER, Thrust (Production)	4	
	11	5109271	WASHER, Thrust (Service)	4	
	5-1	12	M25055	COTTER PIN, Upper suspension arm (0.141 diameter x 1-1/2)	4
13		5101575-02	WASHER, Upper arm bushing thrust	4	
14		5101575-01	BUSHING, Upper arm cam (Production)	4	
14		5109265	BUSHING, Upper arm cam (Service)	4	
14A		5109268	WASHER, Cam felt (Service)	4	
14B		5109266	WASHER, Thrust (Service)	4	
14C		M17031	WASHER, Flat (Service)	4	
14D		5109267	OILER, Cam (Service)	4	
15		5101560	CAM, Upper arm alignment	4	
16		5101559	LOCK, Upper arm alignment cam	4	
5-1	17	5100079	SOCKET ASSY, Lower and upper suspension arm (includes nut) (TRW-S-25-BJ-4002-A-11)	4	
	18	M18078	BOLT, Socket to lower arm (3/8 x 24 x 1-3/4)	8	
	19	M17002	NUT, Socket bolt (3/8 x 24)	8	
	20	M14201	BOLT, Socket to upper arm (3/8 x 24 x 1-1/4)	8	
	21	M17002	NUT, Socket bolt (3/8 x 24)	8	
	22	M17001	WASHER, Socket bolt (7/16 ID x 7/8 OD x 0.084 thick) (Coach 00001 to 00250)	8	
5-1	23	5101016	SPINDLE, Steering, right hand	1	
	23	5101017	SPINDLE, Steering left hand	1	
	24	M17025	NUT, Socket to spindle (5/8 x 18)	4	
	25	M25055	COTTER PIN, Socket bolt nut (0.141 x 1-1/2)	4	
	26	M17027	NUT, Steering spindle (1 x 14)	2	
	27	5100243-04	WASHER, Steering spindle (1 inch) (MWC 32006)	2	
	28	M25063	COTTER PIN, Steering spindle (0.188 x 2)	2	
5-1	29		CONTROL ARM, Steering (See Group 7)		
	30	5106719	SPRING ASSY, Transverse (11 leaf 3") (sup 5100341, 10 leaf) (sup 5101800)	1	
		5106738	LAMINATE, Spring Leaf (3" width)	38 ft.	
	31	5101047	SUPPORT, Spring assy	1	
	32	5101044	BOLT, Spring "U" (10 leaf spring) (coach 00001 to 00322)	2	
	32	5101821	BOLT, Spring "U" (11 leaf spring) (coach 00323 and up)	2	
	33	M17077	NUT, "U" bolt (5/8-18)	4	
	34	5100218	SHACKLE, Lower arm to leaf spring (Replaces 5106471)	4	
	35	5100217	PIN, Shackle	4	
	5-1	36	M17025	NUT, Shackle pin (5/8 x 18)	8
37		M17020	WASHER, Shackle pin (11/16 ID x 1-1/2 OD x 0.134 thick)	8	
37		5101135-100	SPACER, Shackle pin (used for binding spring)	8	
38		M25055	PIN, Shackle pin cotter (0.141 x 1-1/2)	8	
39		5100909-01	BUSHING, Lower suspension arm	4	
40		5100341-R001	LEAF, No. 1 spring with bushings (for 10 leaf spring) (Coach 00001 to 00322)	1	
40		5101800-R001	LEAF, No. 1 spring with bushings (for 11 leaf spring) (Coach 00323 and up)	1	
41		5100909-01	BUSHING, No. 1 spring leaf	2	
5-1		42	5100341-R011	BOLT, Clip (3/8 x 16 x 4-1/4)	2
		43	M17010	NUT, Clip bolt (3/8 x 16)	2
	44	5100341-R012	SPACER, Tube clip (7/16 ID x 3)	2	
	45	5106734	BOLT, Leaf spring center (1/2 x 20 x 7 1/4)	1	
	46	M17013	NUT, Center bolt (1/2 x 20)	1	
	47	M17023	WASHER, Center bolt (1/2 ID)	1	
	48	5101023	ROD ASSY, Radius	2	

REPAIR PARTS LIST

GROUP 5 Frt Suspension
 MODEL 2900R

SD-1075

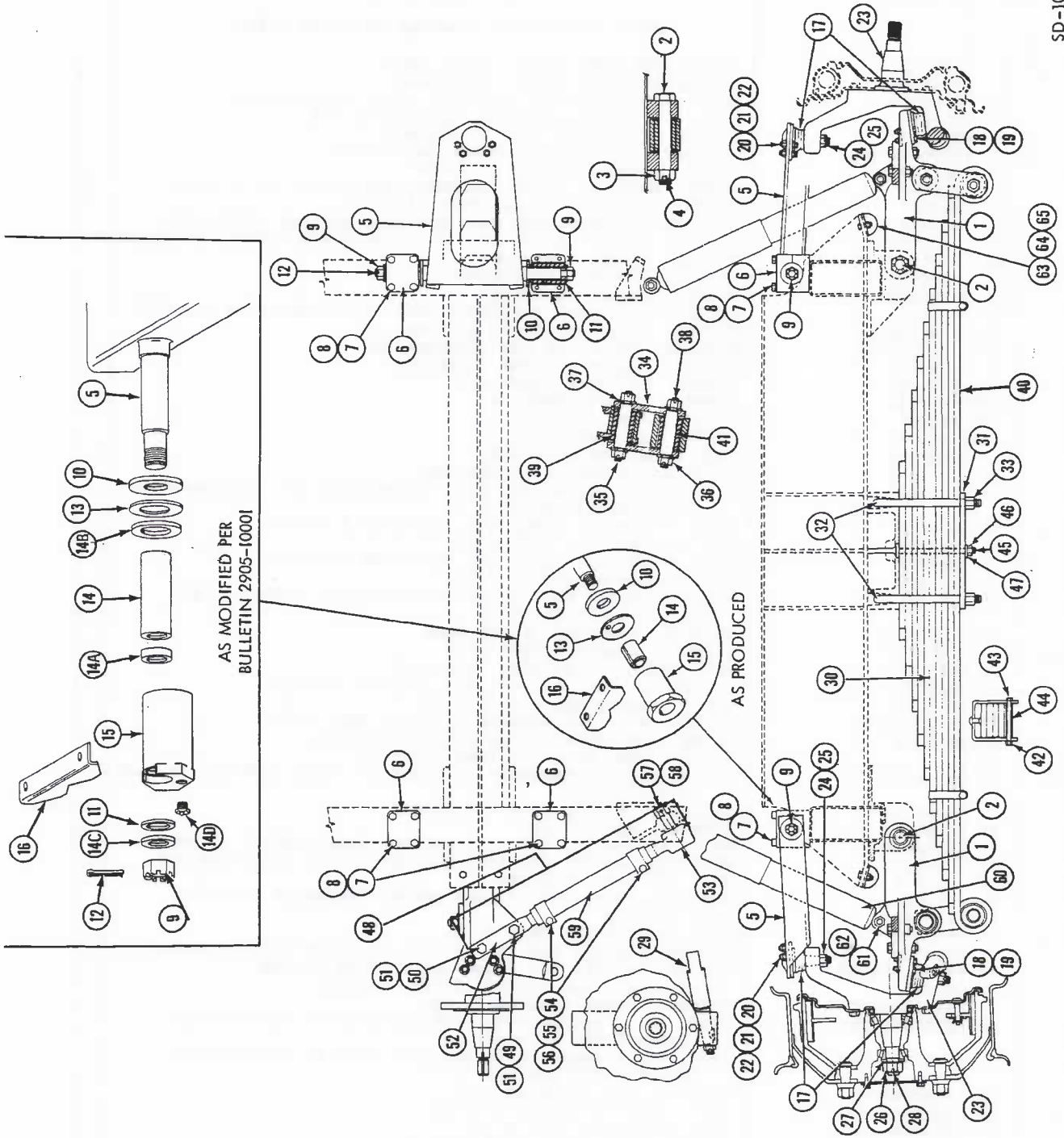


Figure 5-1. Front Suspension (Coaches 00001 to 00645)

REPAIR PARTS LIST

GROUP 5
MODEL 2900R

FIG NO.	ITEM NO.	PART NUMBER	ITEM DESCRIPTION	QTY PER UNIT
5-1	49	M18052	BOLT, Rod assy to lower arm (1/2 x 20 x 1-3/4)	2
	50	M18059	BOLT, Rod assy to lower arm (1/2 x 20 x 2-1/4)	2
	51	M17022	NUT, Rod assy to lower arm bolt (1/2 x 20)	2
	52	5101023-03	ROD END, Lower arm (left hand thread)	2
5-1	53	5100612-03	ROD END ASSY, Right hand thread (TRW L-24-SV-4000-B-11)	2
	54	5100612-R001	BOLT, Clamp (TRW-L-10MN-37x1) (5/8 x 18 x 2-3/4)	4
	55	5100612-R002	NUT, Clamp bolt (TRW-L-10MN-45x1) (5/8 x 18)	4
	56	M17008	WASHER, Clamp bolt lock (5/8)	4
	57	M17064	NUT, Rod end to frame (7/8 x 14 slotted)	2
	58	M25055	PIN, Rod end, nut cotter (0.141 x 1-1/2)	2
5-1	M17046	WASHER, Rod end nut flat (15/16 x 1-3/4)	2	
	59	5100612-01	CLAMP, Rod Tubing (TRW-L24CP8A30)	4
	60	5100991	SHOCK ABSORBER, Front (GAB 665148)	2
	61	M18077	BOLT, Shock absorber attaching (3/4 x 16 x 2-1/4)	4
	62	M17029	NUT, Shock abosrber bolt (3/4 x 16)	4
	M17030	WASHER, Shock absorber bolt (13/16 ID x 1-1/2 OD)	8	
	63	5101071	STOP ASSY, Bump	2
	64	M14216	BOLT, Stop assy to frame (3/8 x 24 x 1)	4
65	M17002	NUT, Stop assy to frame bolt (3/8 x 24)	4	

REPAIR PARTS LIST

GROUP 5 Front Suspension
MODEL 2900R

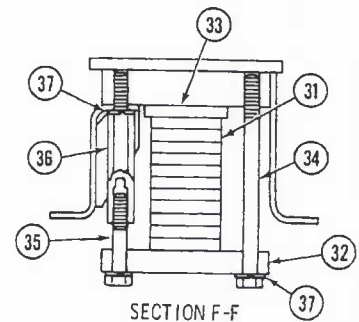
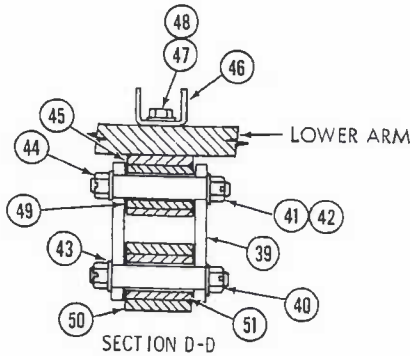
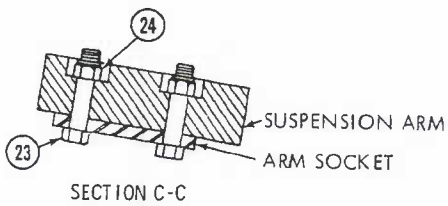
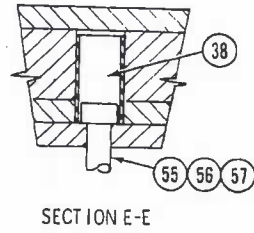
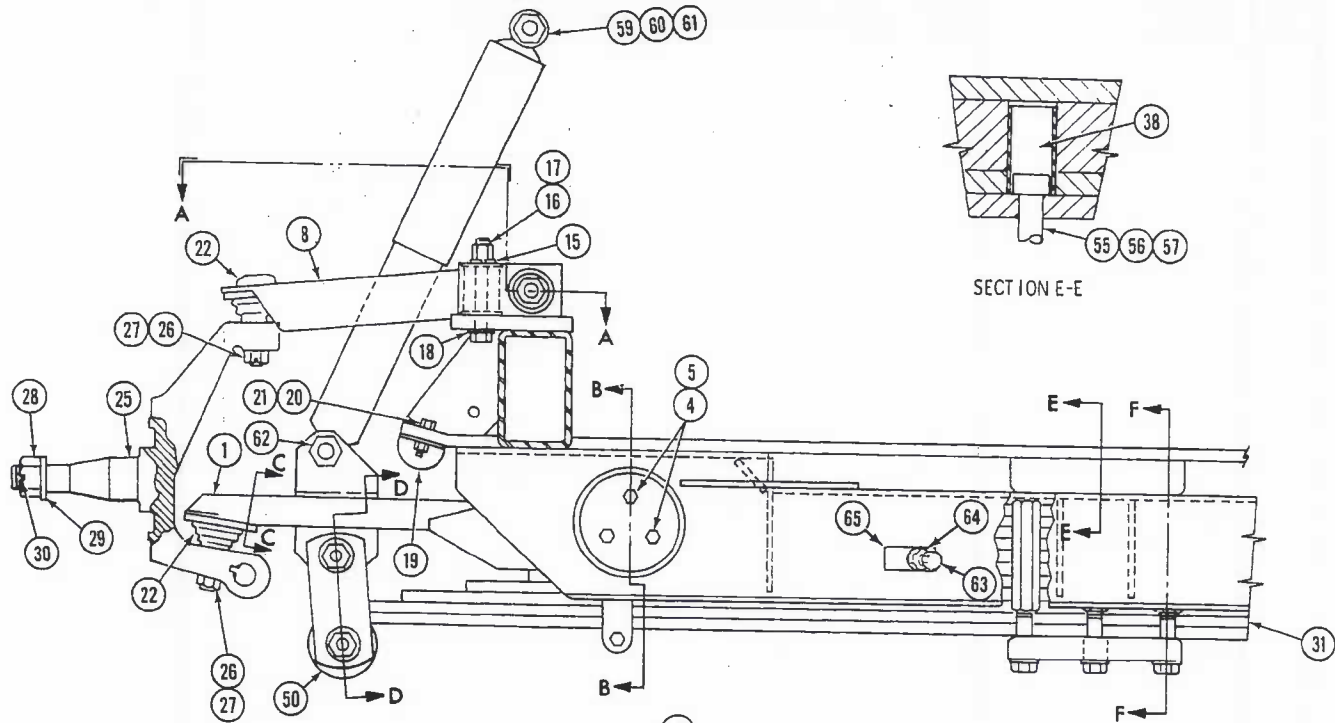
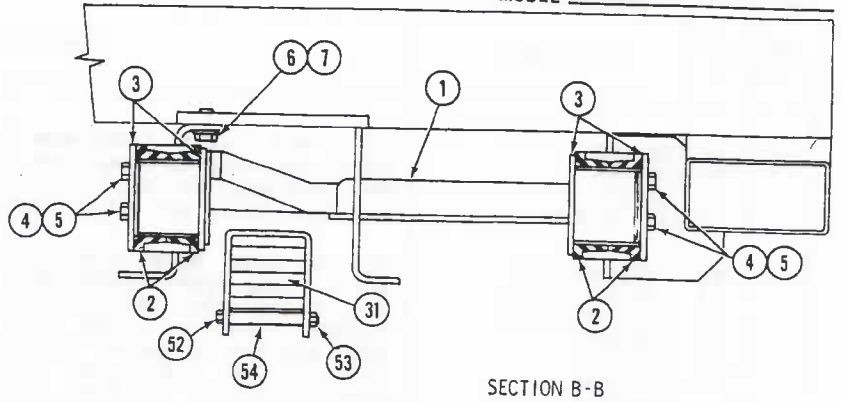
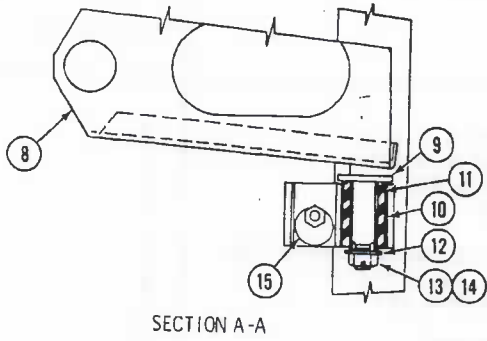


Figure 5-2. Front Suspension (Coaches 00646 & up)

SD-1026

REPAIR PARTS LIST

GROUP 5
MODEL 2900R

FIG NO.	ITEM NO.	PART NUMBER	ITEM DESCRIPTION	QTY PER UNIT
<u>COACHES 00646 AND UP (ALSO COACH 00630)</u>				
5-2	1	5106807-02	SUSPENSION ARM, Lower right hand	1
	1	5106807-01	SUSPENSION ARM, Lower left hand	1
	2	5106856	MOUNT, Lower arm rubber	8
	3	5106311	PLATE, Arm mount retainer	4
	4	M-18023	CAP SCREW, Retainer (3/8-16 x 1-1/4)	12
5-2	5	M-17007	LOCKWASHER, Retainer cap screw (3/8)	12
	6	M-18002	CAP SCREW, Lower arm to frame (1/2-13 x 1)	6
	7	M-17006	LOCKWASHER, Arm cap screw (1/2)	6
	8	5100066-W01	SUSPENSION ARM, Upper	2
	9	5100702	WASHER, Upper arm thrust (1/4 x 2-1/4 Dia.)	4
5-2	10	5106572	MOUNT, Upper arm bushing (caster/camber adjustment)	4
	11	5100909-01	BUSHING, Upper arm rubber	4
	12	M-17031	WASHER, Upper arm flat (21/32 ID x 1-5/16 OD)	4
	13	M-17025	NUT, Upper arm slotted (5/8-18)	4
	14	M-25055	PIN, Upper arm slotted nut cotter (1-1/2)	4
5-2	15	5106804	WASHER, Upper arm adjustment	8
	16	5106571	BOLT, Upper arm adjustment (special)	4
	17	M-17182	NUT, Upper arm bolt (5/8-18 high castle)	4
	18	M-25055	COTTER PIN, Upper arm bolt	4
	19	5101071	STOP, Lower suspension arm bump	2
5-2	20	M-14216	BOLT, Bump stop attaching (3/8-24 x 1)	4
	21	M-17002	LOCK NUT, Bump stop bolt (3/8-24)	4
	22	5100079	SOCKET ASSY, Lower and upper suspension arm (TRW S-25-BJ-4002-A-11)	4
	23	M-14021	BOLT, Socket to upper arm (3/8-24 x 1-1/4)	8
	23	M-18078	BOLT, Socket to lower arm (3/8-24 x 1-3/4)	8
	24	M-17002	NUT, Socket bolt (3/8-24)	16
	25	5101016	SPINDLE, Steering-right hand	1
	25	5101017	SPINDLE, Steering-left hand	1
5-2	26	M-17025	NUT, Socket to spindle (5/8 x 18)	4
	27	M-25055	COTTER PIN, Socket bolt nut (1-1/2")	4
	28	M-17027	NUT, Spindle (wheel hub) (1" x 14)	2
	29	5100243-04	WASHER, Sprindle nut (wheel hub) (1")	2
	30	M-25063	COTTER PIN, Spindle nut (2")	2
NOTE: For steering control arm and linkage see Group 7.				
	31	5106978	SPRING ASSY, Transverse (10 leaf 3")	1
5-2	32	5106688	SUPPORT, Spring assy (bottom of spring)	1
	33	5106400	SHIM, Spring assy (between spring and frame)	1
	34	M-18169	BOLT, Spring to frame (5/8-11 x 8-1/2)	3
	35	M-18170	BOLT, Spring to frame (5/8-11 x 3-1/2)	3
	36	5106689	BOLT, Spring to frame (5/8-11 male, 5/8-11 female)	3
	37	M-17008	LOCKWASHER, Spring bolt (5/8)	9
5-2	38	5106830-03	DOWEL, Spring center bolt locating	1
	39	5100218	SHACKLE, Lower arm to spring (replaces 5106471)	4
	40	5100217	PIN, Shackle	4
	41	M-17025	NUT, Shackle pin (5/8-18)	8
	42	M-17020	WASHER, Shackle pin flat (11/16 ID x 1-1/2 OD x 0.134 thick)	8
5-2	43	5101135-100	WASHER, Shackle pin (used only for binding spring)	16
	44	M-25055	PIN, Shackle pin cotter (1-1/2)	8
	45	5106303	BLOCK, Lower arm to shackle	2
	46	5106319	BRACKET, Lower arm shackle block (shock absorber)	2
	47	M-18102	CAP SCREW, Bracket to lower arm (1/2-20 x 2-1/2)	4
	48	M-17006	WASHER, Bracket cap screw (1/2)	4
	49	5100909-01	BUSHING, Lower arm shackle	2
	50	5106719-R001	LEAF, No. 1 spring w/bushings (for 11 leaf 3" spring)	1
5-2	51	5100909-01	BUSHING, No. 1 spring leaf	2
	52	5100341-R001	BOLT, Spring Clip (3/8-16 x 4-1/4)	2
	53	M-17010	NUT, Spring clip bolt (3/8-16)	2
	54	5100341-R012	SPACER, Spring clip tube	2
	55	5106734	BOLT, Spring center (1/2-20 x 7-1/4)	1

REPAIR PARTS LIST

GROUP 5
MODEL 2900R

FIG NO.	ITEM NO.	PART NUMBER	ITEM DESCRIPTION	QTY PER UNIT
5-2	56	M-17013	NUT, Spring center bolt (1/2-20)	1
	57	M-17023	WASHER, Center bolt nut (1/2)	1
	58	5100991	SHOCK ABSORBER, Front (GAB 665148 <i>59009</i> <i>Measure 6833</i>)	2
	59	M-18093	BOLT, Shock absorber attaching - upper (3/4-16 x 3-1/2)	2
	60	M-17029	NUT, Shock attaching bolt (3/4-16)	4
	61	M-17030	WASHER, Shock attaching bolt (13/16 x 1-1/2)	2
	62	M-18074	BOLT, Shock attaching lower (3/4-16 x 3)	2
	63	M-18016	BOLT, Steering linkage stop (1/2-20 x 1-12/) (See Group 7)	2
	64	M-17087	NUT, Steering linkage bolt (1/2-20) (See Group 7)	2
	65	5107608	STOP, Wheel (welded to frame)	2