

THE
REMARKABLE
FMC 2900R
MOTOR
COACH



WE ASKED RV OWNERS WHAT THE ULTIMATE MOTOR COACH SHOULD BE

You've never seen a motor coach like the FMC 2900R. It's long, low and beautifully built on a custom chassis designed for this coach alone. The handling is unlike any motor coach you've ever driven—unusually smooth, stable and quiet. Four wheel independent suspension (just like some of Europe's finest cars) and huge power assisted brakes surround the driver with confidence. Luxury living is more than a promise—with conveniences that let you take life easy on or off the road. Give the 2900R a thorough examination at your FMC dealer soon. Then take a test drive and experience the difference engineering makes.

Two floor plans with 29 feet of easy living

- Color-coordinated interiors
- 8-cubic ft. refrigerator/freezer
- 4-burner range
- Eye-level oven
- Tub/shower
- 2 rear beds, each 36 x 80 convert to queen-sized bed
- Double front bed 43 x 76
- Sofa lounge (optional) converts to 95 x 44 bed
- Rear lounge table

Model A: Seating for two passengers up front

- Four-place dinette
- Tufted chenille fabrics

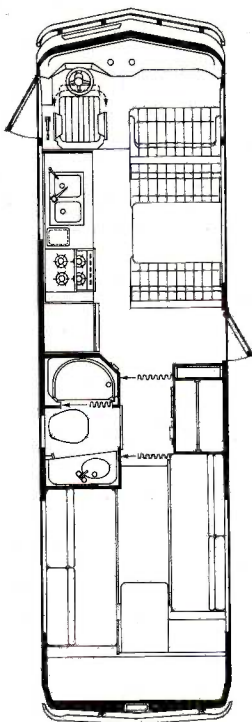
Passengers never had it so good: There's passenger seating for two up front—with plenty of legroom and seats with head restraints. The dinette seats four comfortably—and provides plenty of room for working or serving delicious meals.

Model J: Sofa-lounge with Fore 'N Aft travel seat

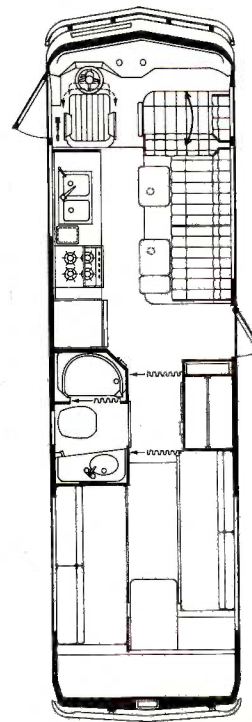
- Twin Tuckaway tables
- Woven velvet fabrics

The unique Fore 'N Aft travel seat provides couch-like comfort for two passengers while traveling, then converts to an L-shaped luxury sofa that seats five. You can set up one of the tuckaway tables—or two—to create a dining area for four.

Model A



Model J



THEN WE BUILT IT FROM SCRATCH

Specifications

(Effective Oct. 1, 1973)
 Length: 29 feet, 7 inches
 Width: 8 feet
 Height: 9 feet, 1½ inches
 Front Wheel Track: 81 inches
 Wheel Base: 185 inches
 GVW Rating: 14,500 pounds

Standard Features

Automotive

440 cu. in. rear engine—Chrysler Industrial V8
 Engine completely accessible from exterior
 Custom chassis
 Independent front and rear suspension
 Heavy duty radiator with transmission cooler
 Heavy duty automatic transmission
 105 amp. hour battery
 85 amp. alternator
 60 gallon fuel tank
 Full instrumentation—fuel, speed, oil, water, tach, generator
 Power steering
 Power brakes
 Frame tie and tow hooks
 Concealed front wipers and washers
 Michelin tires—7.50x17—8 Ply Radial
 Wheel covers
 Adjustable column—tilt wheel steering
 Jack, Lug wrench & stand
 Mud flaps

Electrical

110V/12V lights and plugs
 45 amp. converter
 TV antenna
 Prewired trailer connector
 220 amp. hour auxiliary battery
 6500 watt auxiliary power unit
 Large battery equalizer
 50 amp. land line

Convenience

Map light
 Tinted windows
 AM-FM stereo radio and tape deck
 Inside/outside tackle-ski storage

Livability

Carpeted cabinets
 Metal drawer slides
 Deep shag carpeting
 Vinyl fabric wall covering
 60 gallon water capacity
 Water purifier

City water hook-up extension
 Fresh water winterization kit
 Sink covers
 65 gallon dual waste holding tanks
 Thermasan waste system
 Waste tank handle extension
 10 gallon hot water heater
 85 pound LPG tank
 84 cu. ft. interior storage
 26 cu. ft. exterior storage
 30 cu. ft. exterior storage (J model)
 Enclosed exterior stowage
 System indicator panel
 Vehicle level indicator
 Exterior porch lamp
 Air foil wiper blades

Safety

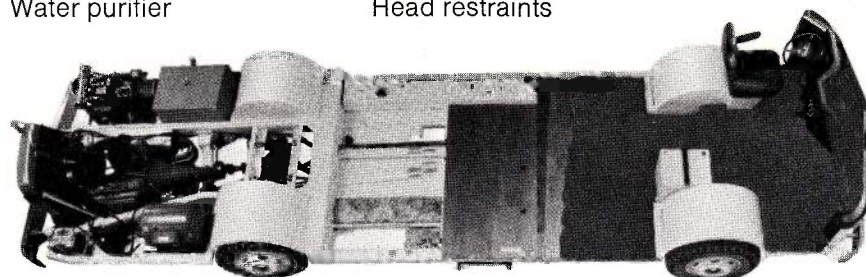
Steel chassis
 Aluminum upper cage frame
 Seat belts
 Shoulder harness
 Head restraints

Driver and passenger doors
 Emergency flashers
 Brake warning light
 Tinted safety windshield
 Fire extinguisher
 Courtesy door lights
 Shock-absorbing bumpers
 Back-up lights and warning buzzer

Heating & Cooling

36000 BTU automotive heat/defrost
 30000 BTU ducted furnace
 28000 BTU automotive cooling (rated at the vents)
 22000 BTU dual auxiliary cooling (rated at the vents)
 Air conditioner winterization kit

Our continuing program of product improvement makes specifications, equipment and prices subject to change without notice.



THE CHASSIS

- Chrysler Industrial V-8 engine in the rear
- Heavy duty Chrysler automatic transmission
- 6500 watt auxiliary power plant
- 60 gallon fuel tank
- 85 pound LPG tank
- Adjustable steering post, wheel and seat
- Visual read-out of all systems
- Forged aluminum safety shield
- Heavy duty cooling system
- Full perimeter steel alloy frame
- 49.3 sq. in. brakes front & rear
- Impact absorbing bumpers front & rear

FMC

EASY TO LOOK AT.
EASY TO DRIVE.
EASY TO LIVE IN.



Low to the ground



A door for the driver



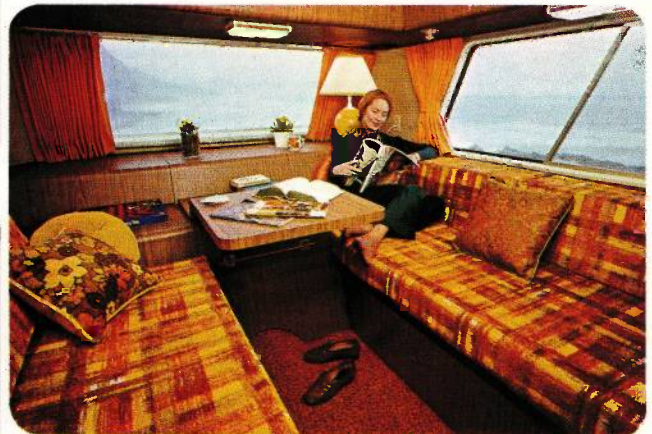
Rear-engine quiet



Fore 'N Aft sofa seating



Flat front deck



Comfortable master cabin



L-shaped luxury lounge



Home cooking away from home

FMC Consumer Products

Engineering makes the difference.

FMC Corporation, Recreational Vehicles Division,
P. O. Box 664, Santa Clara, CA 95052